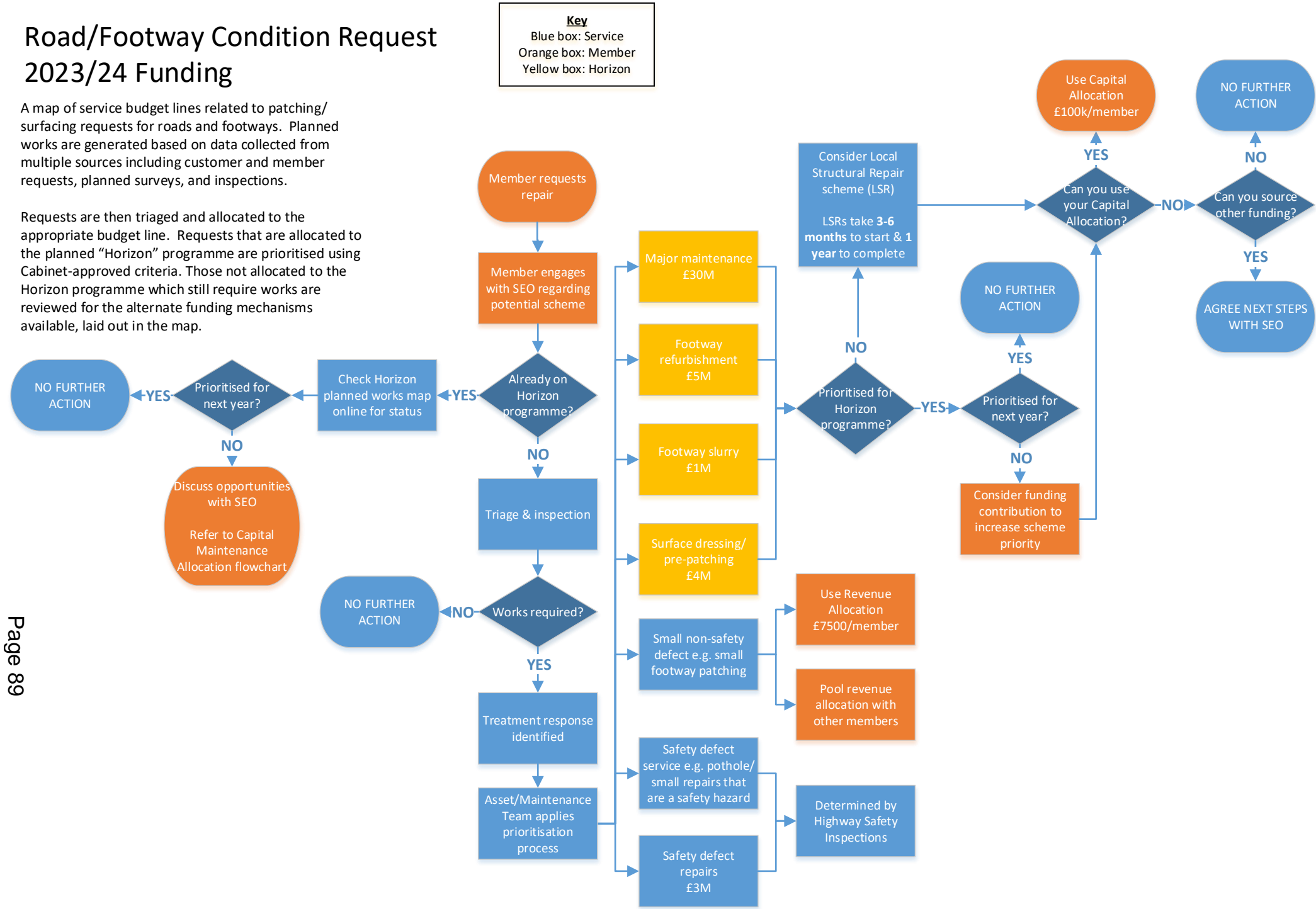


# Road/Footway Condition Request 2023/24 Funding

A map of service budget lines related to patching/surfacing requests for roads and footways. Planned works are generated based on data collected from multiple sources including customer and member requests, planned surveys, and inspections.

Requests are then triaged and allocated to the appropriate budget line. Requests that are allocated to the planned “Horizon” programme are prioritised using Cabinet-approved criteria. Those not allocated to the Horizon programme which still require works are reviewed for the alternate funding mechanisms available, laid out in the map.



## Highway Prioritisation Criteria

**Highway Maintenance/Improvement Issues**  
Based on analysis of condition data (highway safety inspections).

**Network Hierarchy**  
Greater priority given to roads/key assets on roads that have the greatest usage or need.

**Risk**  
Greater priority given to schemes that pose a risk to public safety.

**Value for Money**  
Uses the right treatments at the right time to produce cost effective solutions.

**Network Management**  
Works are programmed to minimise disruption & maximise benefits by combining schemes where possible.

## Horizon

Horizon schemes form Surrey's long term planned maintenance programme based on condition surveys of the network. It is compiled based on 5-yr funding projections.

Horizon schemes take 2 years to get off the ground for urgent schemes, 5-10 years for lower priority schemes.

## Contact Highways

Email: [councillors@surreycc.gov.uk](mailto:councillors@surreycc.gov.uk)

Online reporting form: [www.surreycc.gov.uk/reportahighwayproblem](http://www.surreycc.gov.uk/reportahighwayproblem)

Phone Councillors' priority line: 0300 200 1014

Phone General Highways line: 0300 200 1003

Genuine & Immediate Safety Hazards (24 hr): 0300 200 1014

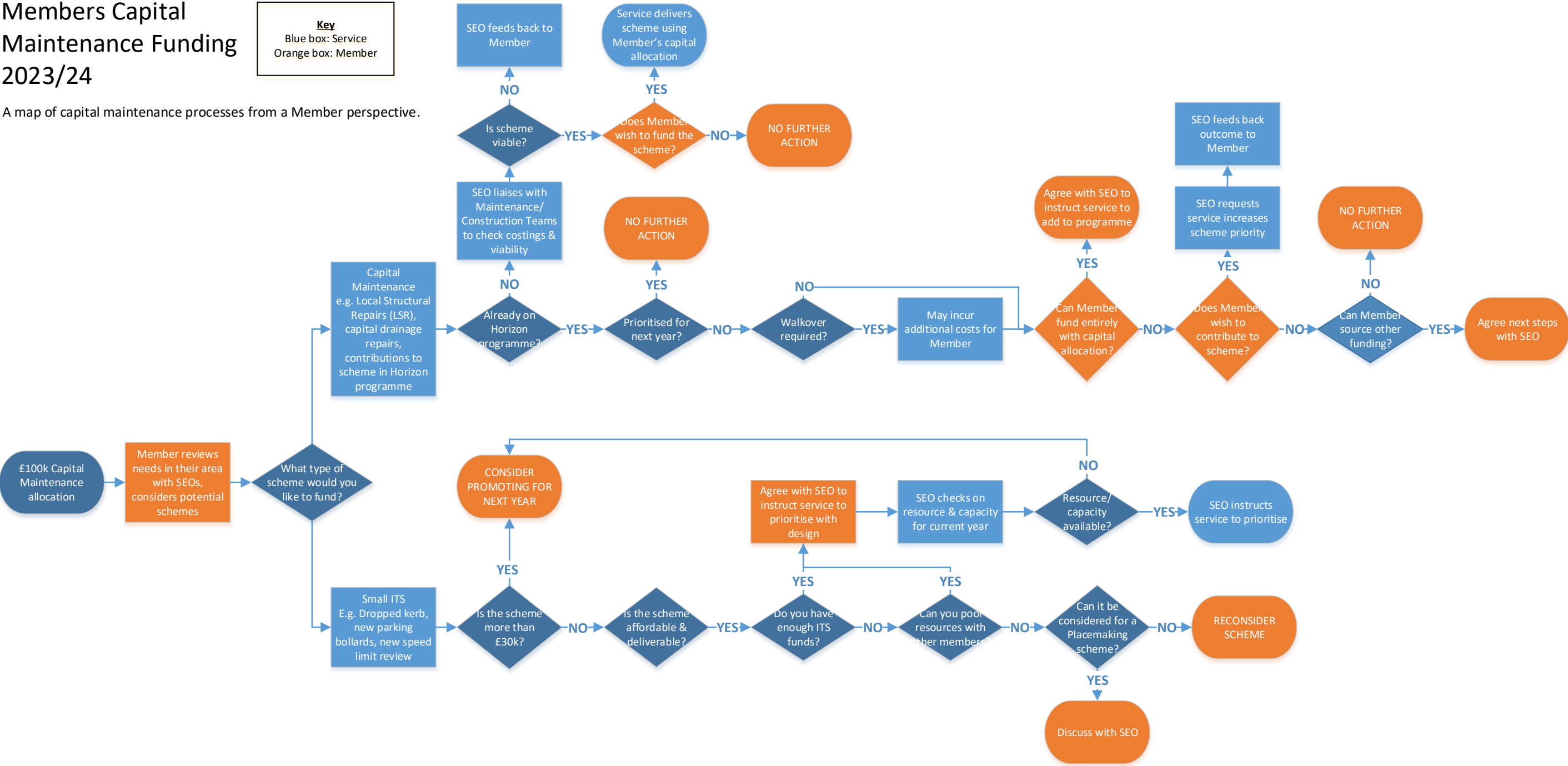
Members Capital  
Maintenance Funding  
2023/24

A map of capital maintenance processes from a Member perspective.

Key

Blue box: Service

Orange box: Member



Highway Prioritisation Criteria

**Highway Maintenance/Improvement Issues**  
Based on analysis of condition data (highway safety inspections).

**Network Hierarchy**  
Greater priority given to roads/key assets on roads that have the greatest usage or need.

**Risk**  
Greater priority given to schemes that pose a risk to public safety.

**Value for Money**  
Uses the right treatments at the right time to produce cost effective solutions.

**Network Management**  
Works are programmed to minimise disruption & maximise benefits by combining schemes where possible.

Horizon

Horizon schemes form Surrey's long term planned maintenance programme based on condition surveys of the network. It is compiled based on 5-yr funding projections.

Horizon schemes take 2 years to get off the ground for urgent schemes, 5-10 years for lower priority schemes.

Contact Highways

**Email:** [councillors@surreycc.gov.uk](mailto:councillors@surreycc.gov.uk)

**Online reporting form:** [www.surreycc.gov.uk/reportahighwayproblem](http://www.surreycc.gov.uk/reportahighwayproblem)

**Phone Councillors' priority line:** 0300 200 1014

**Phone General Highways line:** 0300 200 1003

**Genuine & Immediate Safety Hazards (24 hr):** 0300 200 1014

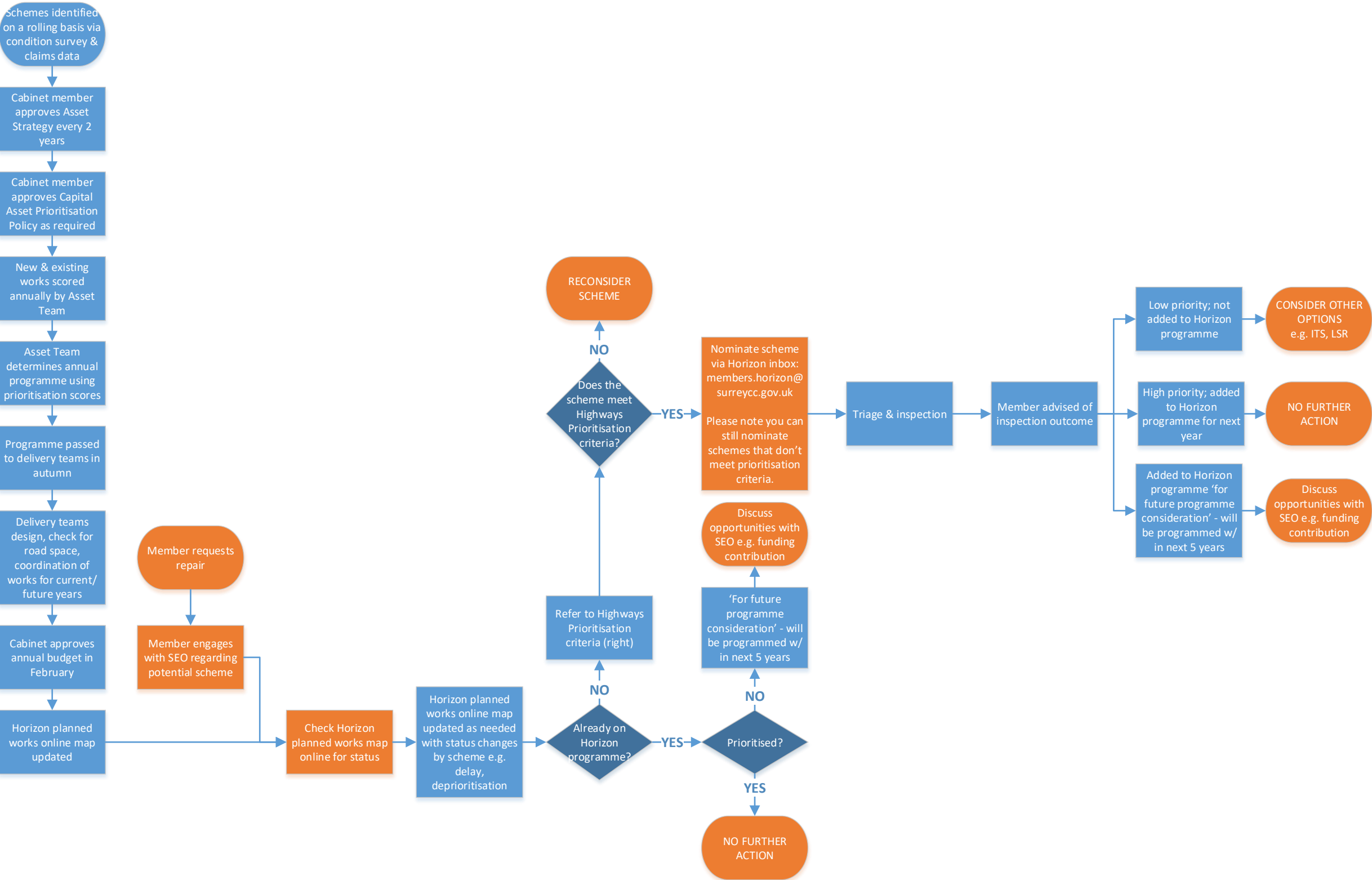
# Horizon – Planned Works Programme

A map explaining the prioritisation of works and governance of the forward programme of works.

**Key**

Blue box: Service

Orange box: Member



# ITS

## 2023/24 Funding

A map explaining the governance and prioritisation of ITS schemes for the 2023/24 financial year.

Key

Blue box: Service

Orange box: Member

